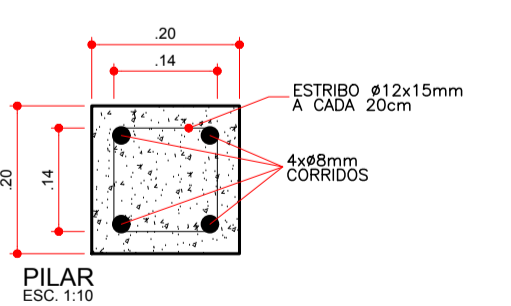
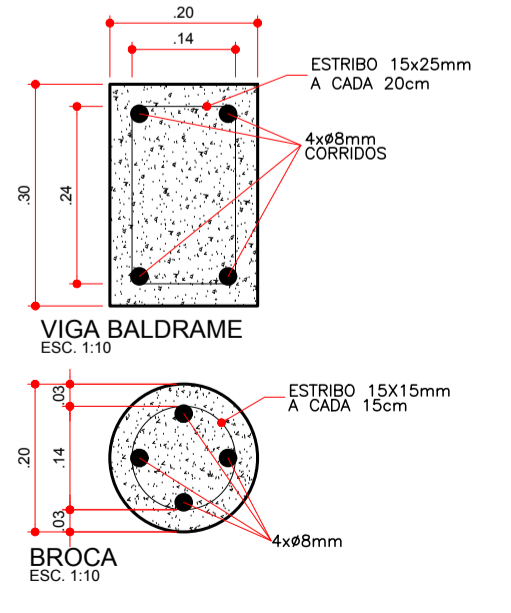
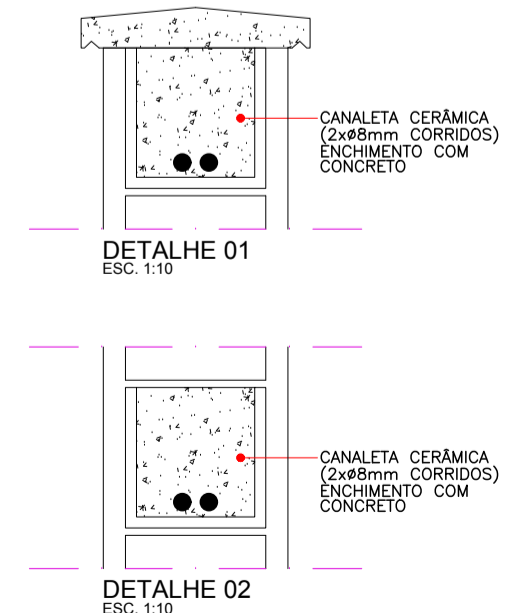
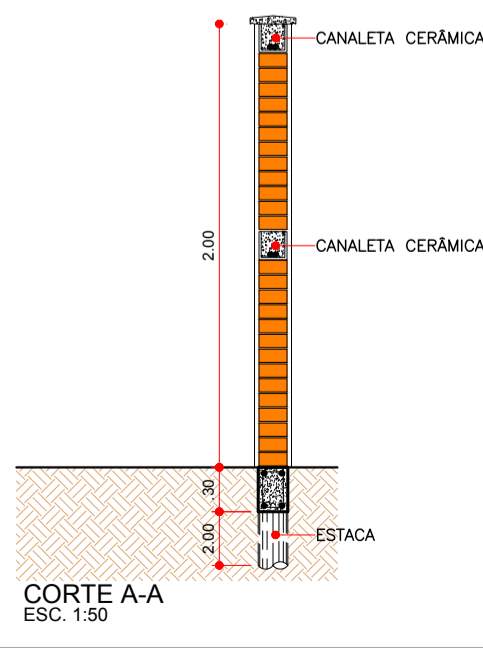
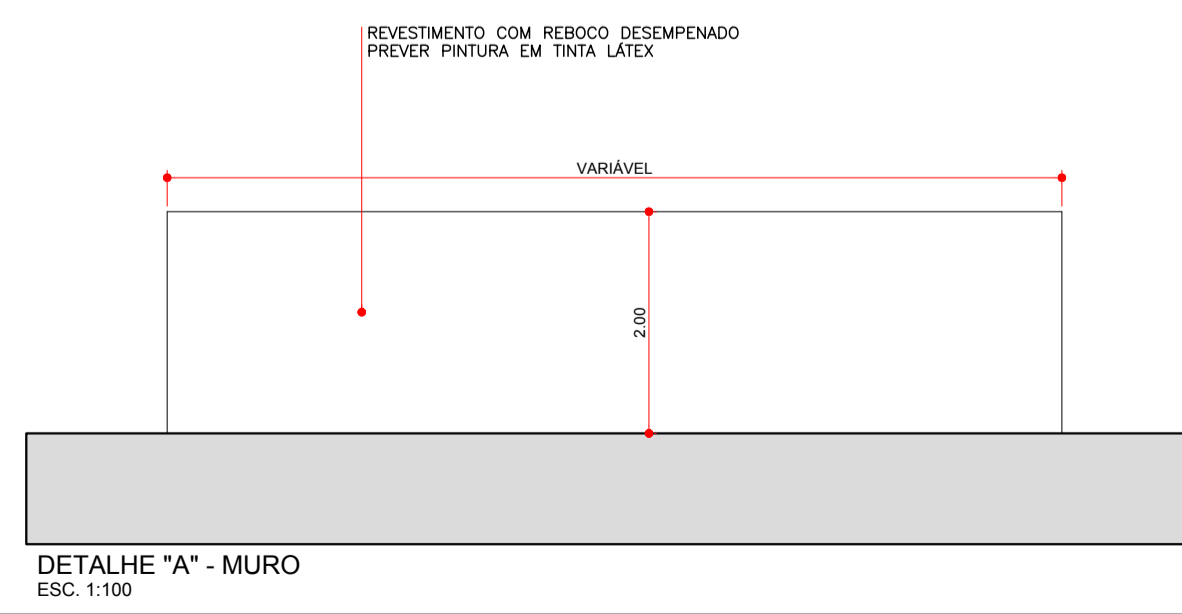


RUA FRANCISCO SANCHES ALCAZAR (EX-RUA 7)

PLANTA
ESC. 1:125

PROLONGAMENTO DA RUA PROF. MASSUD JOSÉ NACHEF (EX-RUA 22)



LEGENDA	
	MURO A CONSTRUIR
	MURO A DEMOLIR



MURO ARENINHAS	
TIPO DE OBRA:	DEMOLIÇÃO E EXECUÇÃO DE MURO DE FECHAMENTO
ASSUNTO:	PLANTA E DETALHES CONSTRUTIVOS
PROPRIETÁRIO:	PREFEITURA MUNICIPAL DE PEDERNEIRAS
LOCAL:	RUA PROF. MASSUD J. NACHEF CDM A RUA FRANCISCO S. ALCAZAR
RESP. TÉCN.:	LEANDRO ROSA - ENG. CIVIL CREA/SP 5069465469
DESENHO:	RANDAL BERGAMASCO - TÉCNICO EM EDIFICAÇÕES CFT/SP 2724026489-0
DATA:	JAN/2022
ESCALA:	INDICADA

ANEXO I

F O L H A

ÚNICA