

VIGAS DO NÍVEL 495.00

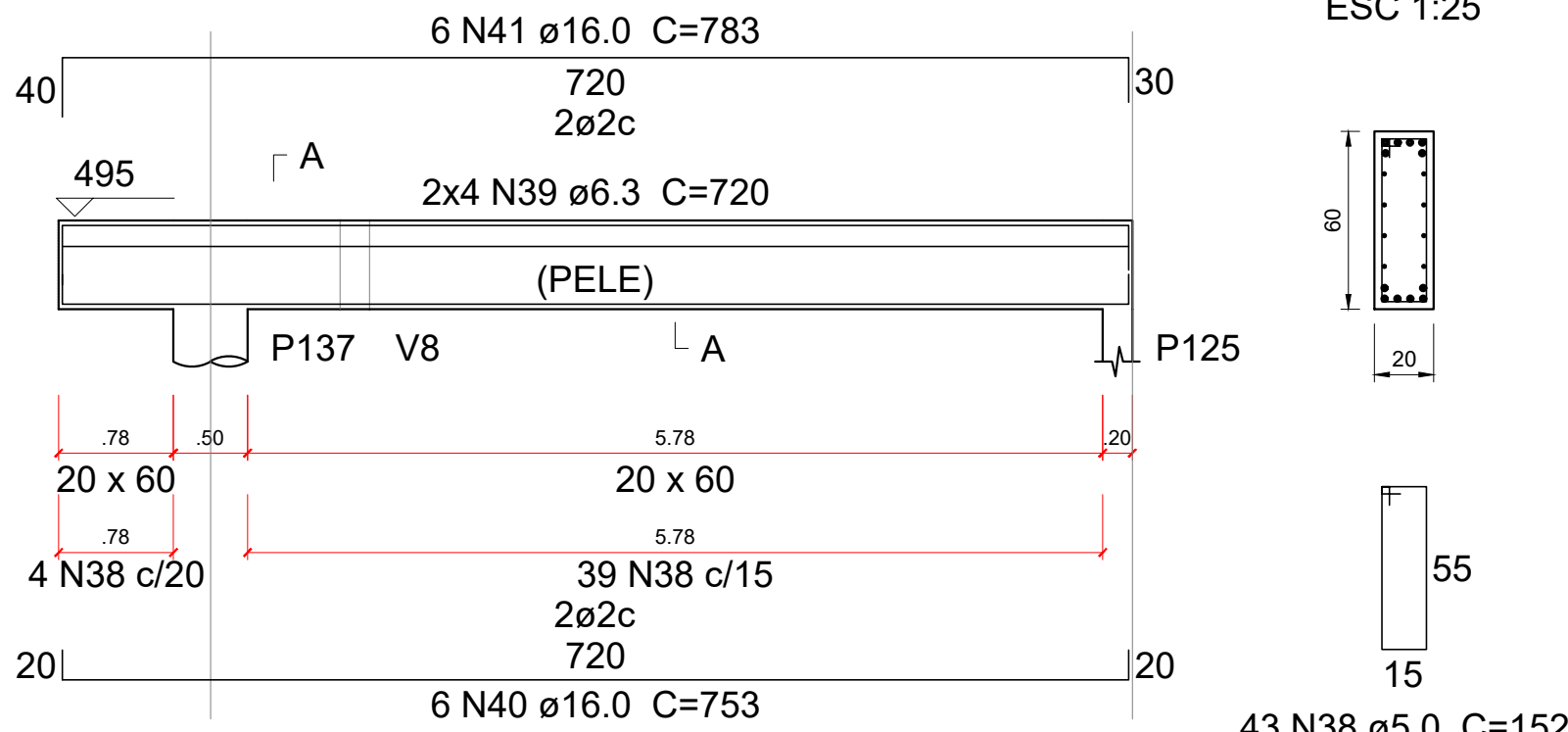
RELAÇÃO DO AÇO						
ELEMENTO	AÇO	N	DIAM.	Q.	UNIT. (cm)	C. TOTAL (cm)
V1	CA-60	1	5,0	138	132	18216
	CA-50	2	10,0	6	1198	7188
	CA-50	3	10,0	6	1128	6768
V2	CA-60	4	5,0	38	112	4256
	CA-50	5	10,0	4	660	2640
V3	CA-60	6	5,0	38	112	4256
	CA-50	7	10,0	6	660	3960
V4	CA-60	8	5,0	42	112	4704
	CA-50	9	10,0	6	735	4410
V5	CA-50	10	6,3	66	212	13992
	CA-50	NT1	6,3	66	152	10032
	CA-50	11	6,3	12	1075	12900
	CA-50	NT2	6,3	12	1075	12900
	CA-50	12	16,0	6	1108	6648
V6	CA-50	13	16,0	4	1188	4752
	CA-60	14	5,0	66	152	10032
	CA-50	15	6,3	8	1115	8920
	CA-50	16	12,5	3	1149	3447
	CA-50	17	12,5	3	1169	3507
	CA-60	18	5,0	38	112	4256
V7	CA-50	19	10,0	4	660	2640
	CA-60	20	5,0	54	152	8208
V8	CA-50	21	6,3	8	845	6760
	CA-50	22	16,0	6	878	5268
	CA-50	23	16,0	4	898	3592
V9	CA-60	24	5,0	39	92	3588
	CA-50	25	10,0	4	690	2760
V10	CA-60	26	5,0	13	92	1196
	CA-50	27	10,0	4	265	1060
V11	CA-60	28	5,0	13	92	1196
	CA-50	29	10,0	4	265	1060
V12	CA-60	30	5,0	51	112	5712
	CA-50	31	10,0	4	893	3572
V13	CA-60	32	5,0	3	116	348
	CA-50	33	10,0	2	95	190
V14	CA-50	34	10,0	2	125	250
	CA-60	35	5,0	3	116	348
V15	CA-50	36	10,0	2	95	190
	CA-50	37	10,0	2	125	250
V16	CA-60	38	5,0	43	152	6536
	CA-50	39	6,3	8	720	5760
	CA-50	40	16,0	6	753	4518
	CA-50	41	16,0	6	783	4698
	CA-60	42	5,0	41	132	5412
	CA-50	43	12,5	3	674	2022
V17	CA-50	44	12,5	3	694	2082
	CA-60	45	5,0	35	152	5320
	CA-50	46	6,3	8	530	4240
V18	CA-50	47	16,0	6	563	3378
	CA-50	48	16,0	6	593	3558
	CA-60	49	5,0	39	112	4368
VC1	CA-50	50	10,0	4	675	2700
	CA-60	51	5,0	31	142	4402
VC2	CA-50	52	6,3	8	345	2760
	CA-50	53	10,0	3	380	1140
	CA-50	54	10,0	3	400	1200
	CA-60	55	5,0	73	142	10366
	CA-50	56	6,3	8	762	6096
VC3	CA-50	57	12,5	3	796	2388
	CA-50	58	12,5	3	816	2448
	CA-60	59	5,0	24	142	3408
VC4	CA-50	60	6,3	8	276	2208
	CA-50	61	10,0	3	311	933
	CA-50	62	10,0	3	331	993
	CA-60	63	5,0	57	142	8094
VC4	CA-50	64	6,3	8	565	4520
	CA-50	65	10,0	3	600	1800
	CA-50	66	10,0	3	620	1860
305180						

RESUMO DO AÇO			
AÇO	DIAM.	C. TOTAL (m)	PESO+10% (kg)
CA-50	6,3	911	245
CA-50	10,0	476	323
CA-50	12,5	159	168
CA-50	16,0	364	632
CA-60	5,0	1142	193

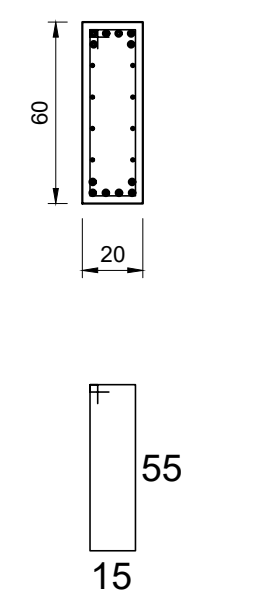
PESO TOTAL			
CA-50	1369		
CA-60	193		

Volume concreto(C25) = 15,20 m³  
Forma madeira = 191,50 m²

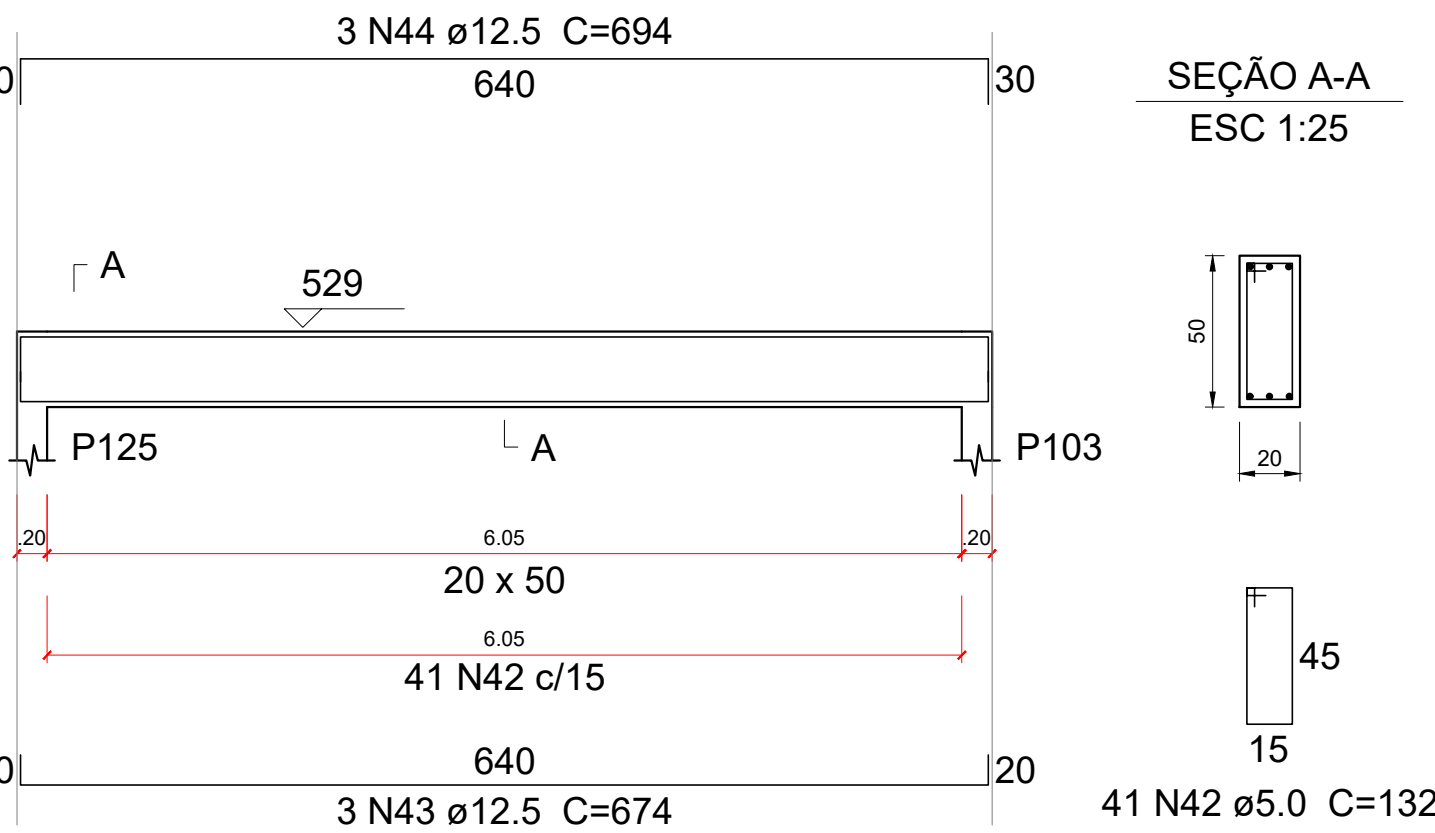
V15  
ESC 1:50



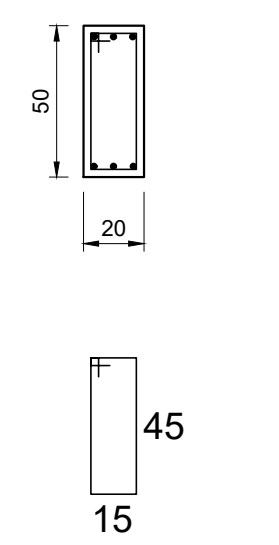
SEÇÃO A-A  
ESC 1:25



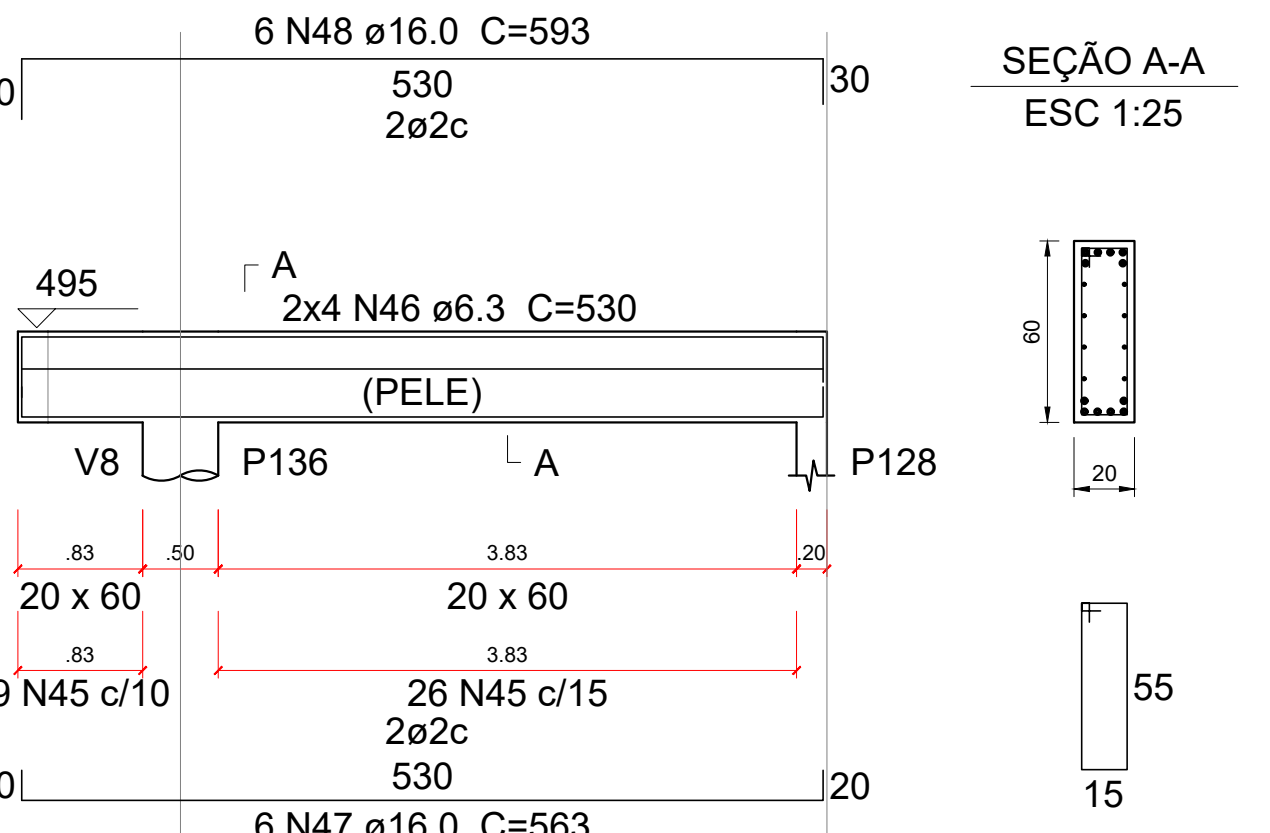
V16  
ESC 1:50



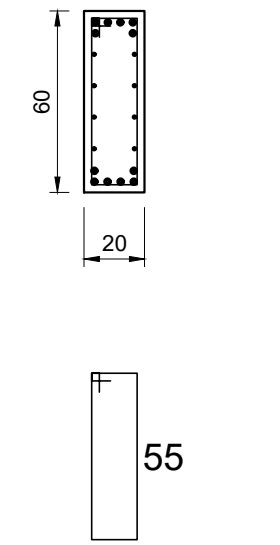
SEÇÃO A-A  
ESC 1:25



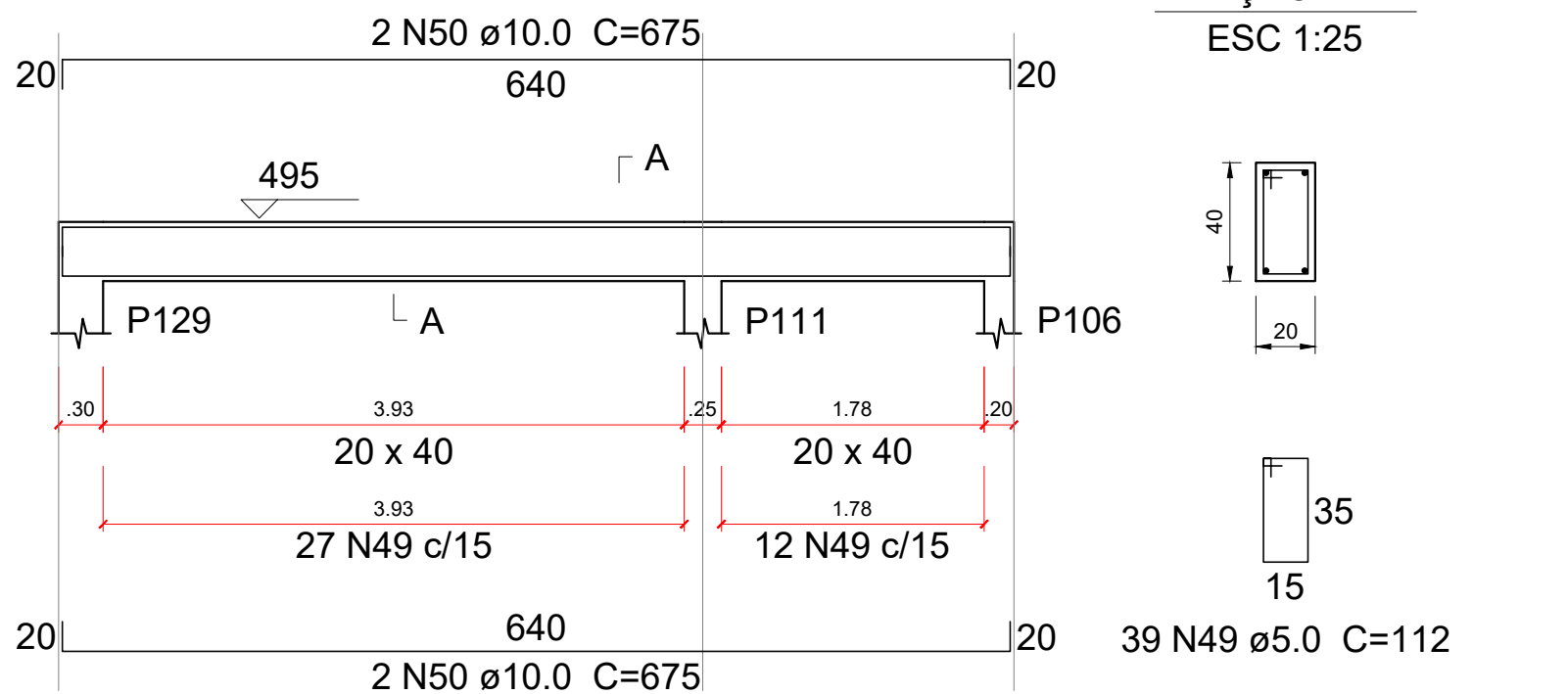
V17  
ESC 1:50



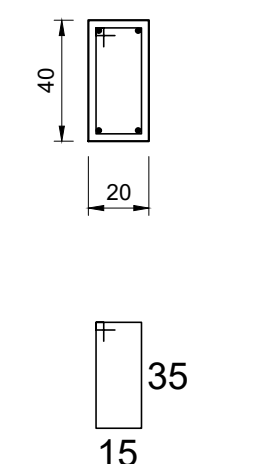
SEÇÃO A-A  
ESC 1:25



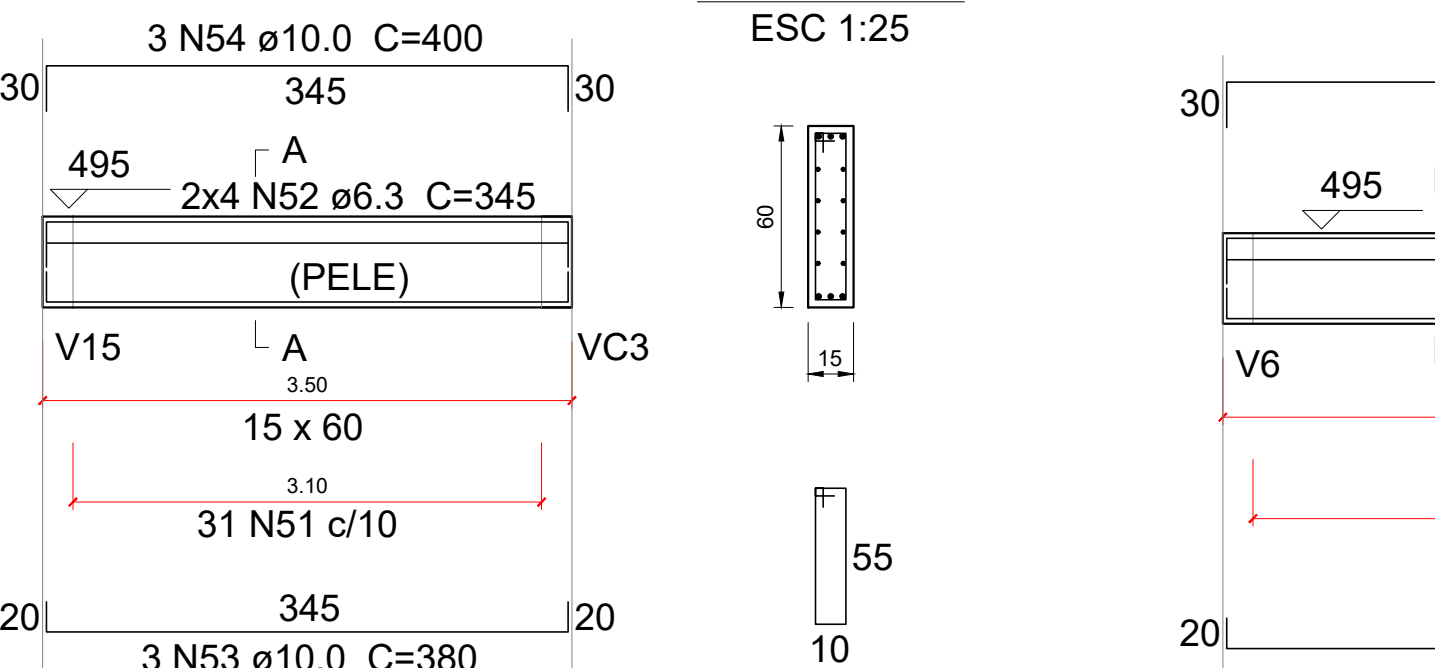
V18  
ESC 1:50



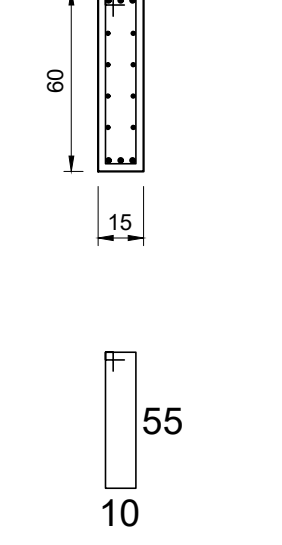
SEÇÃO A-A  
ESC 1:25



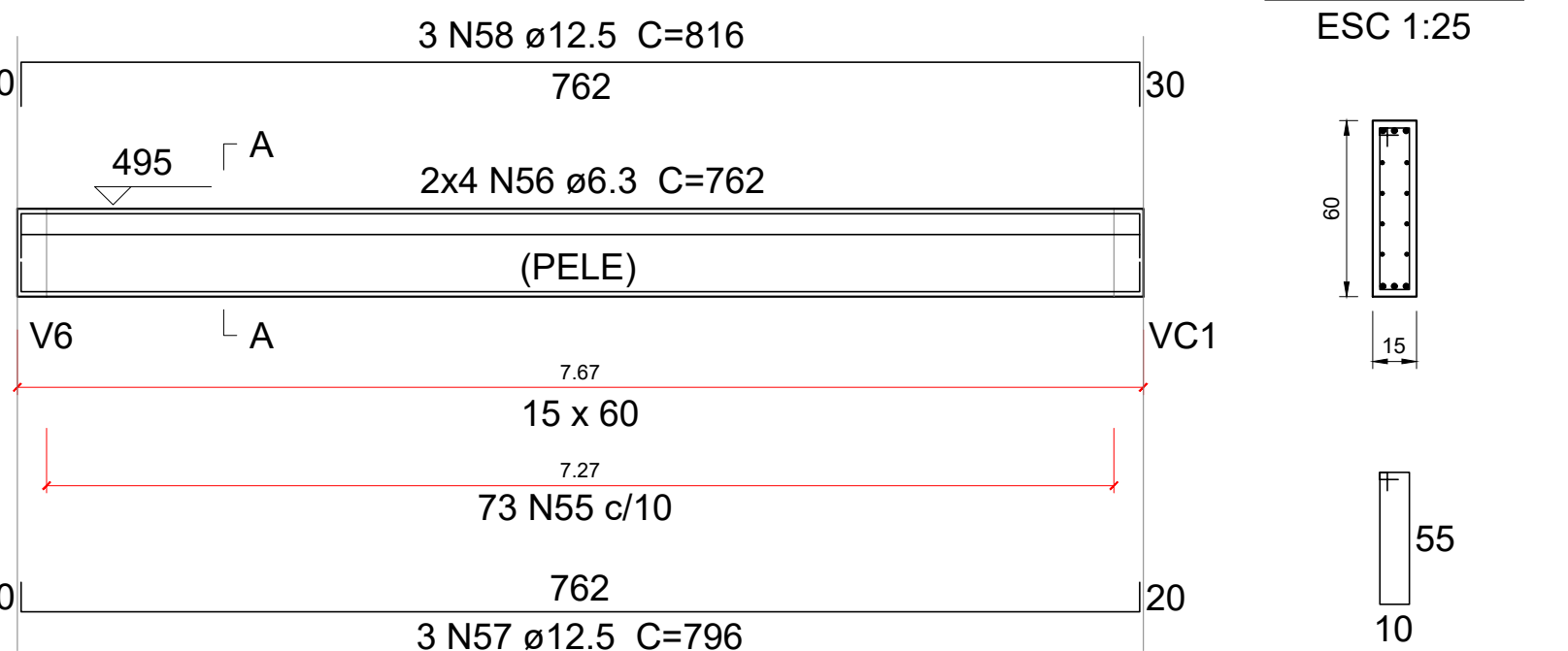
VC1  
ESC 1:50



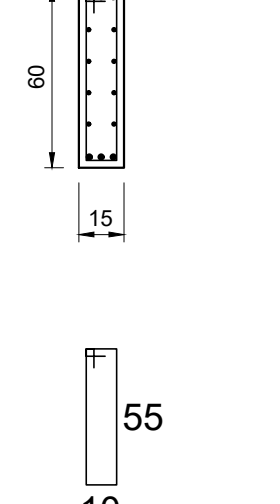
SEÇÃO A-A  
ESC 1:25



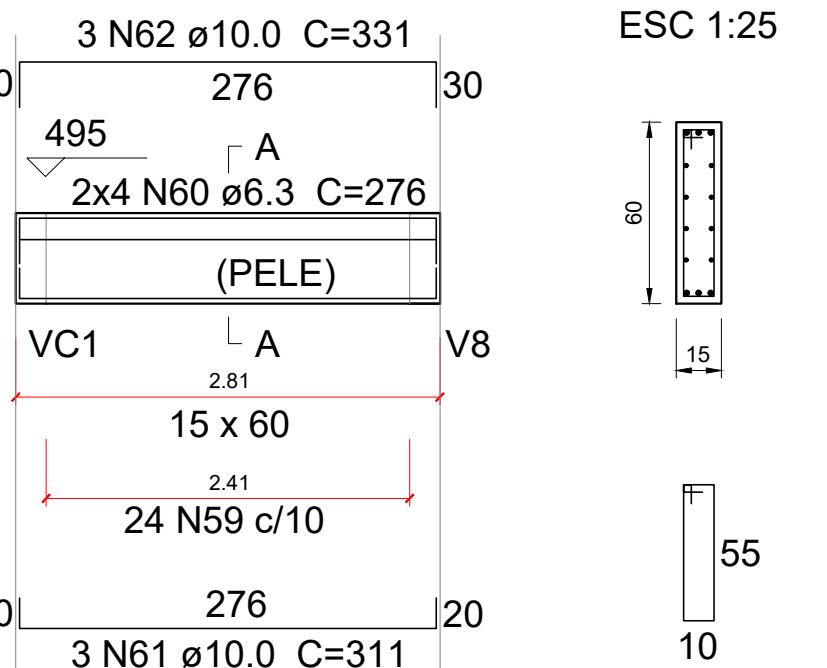
VC2  
ESC 1:50



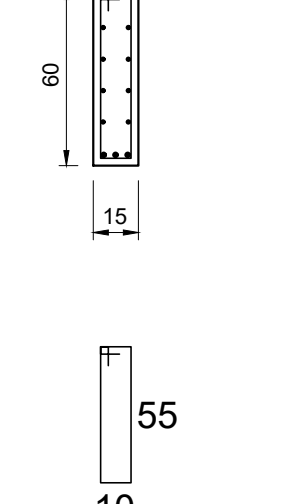
SEÇÃO A-A  
ESC 1:25



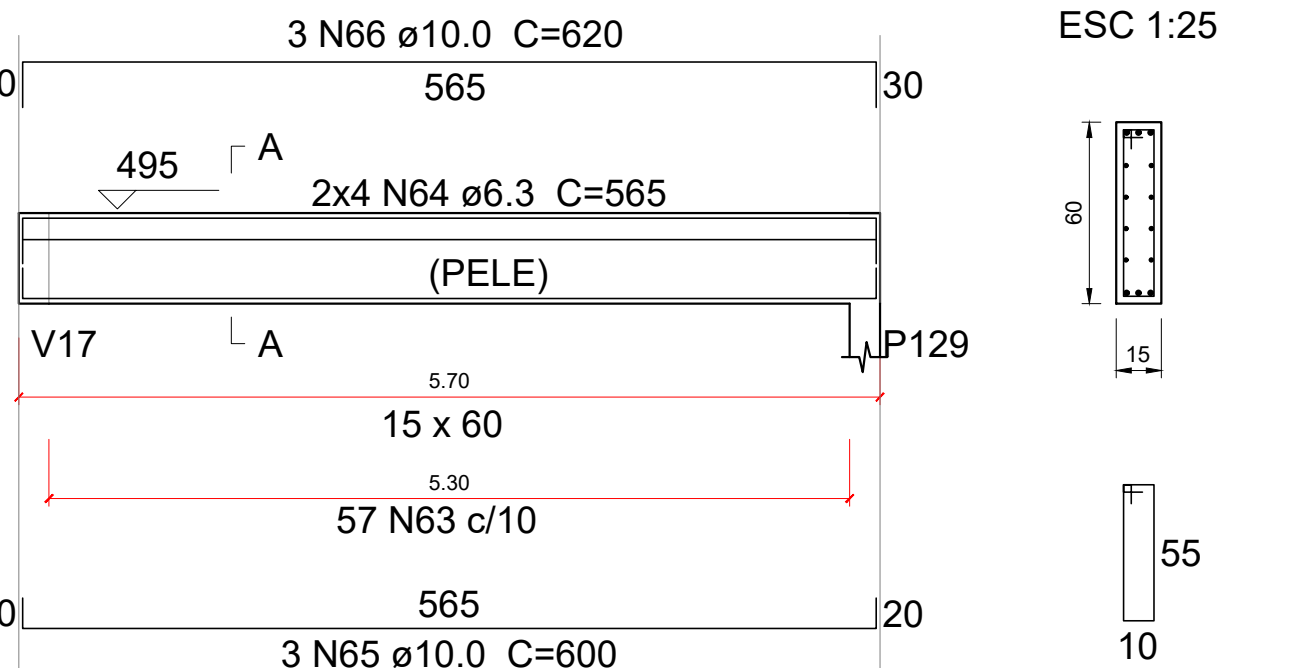
VC3  
ESC 1:50



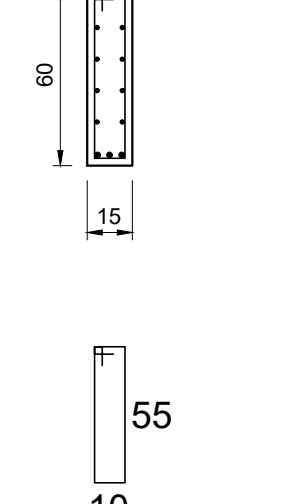
SEÇÃO A-A  
ESC 1:25



VC4  
ESC 1:50



SEÇÃO A-A  
ESC 1:25



ANEXO I

22/24