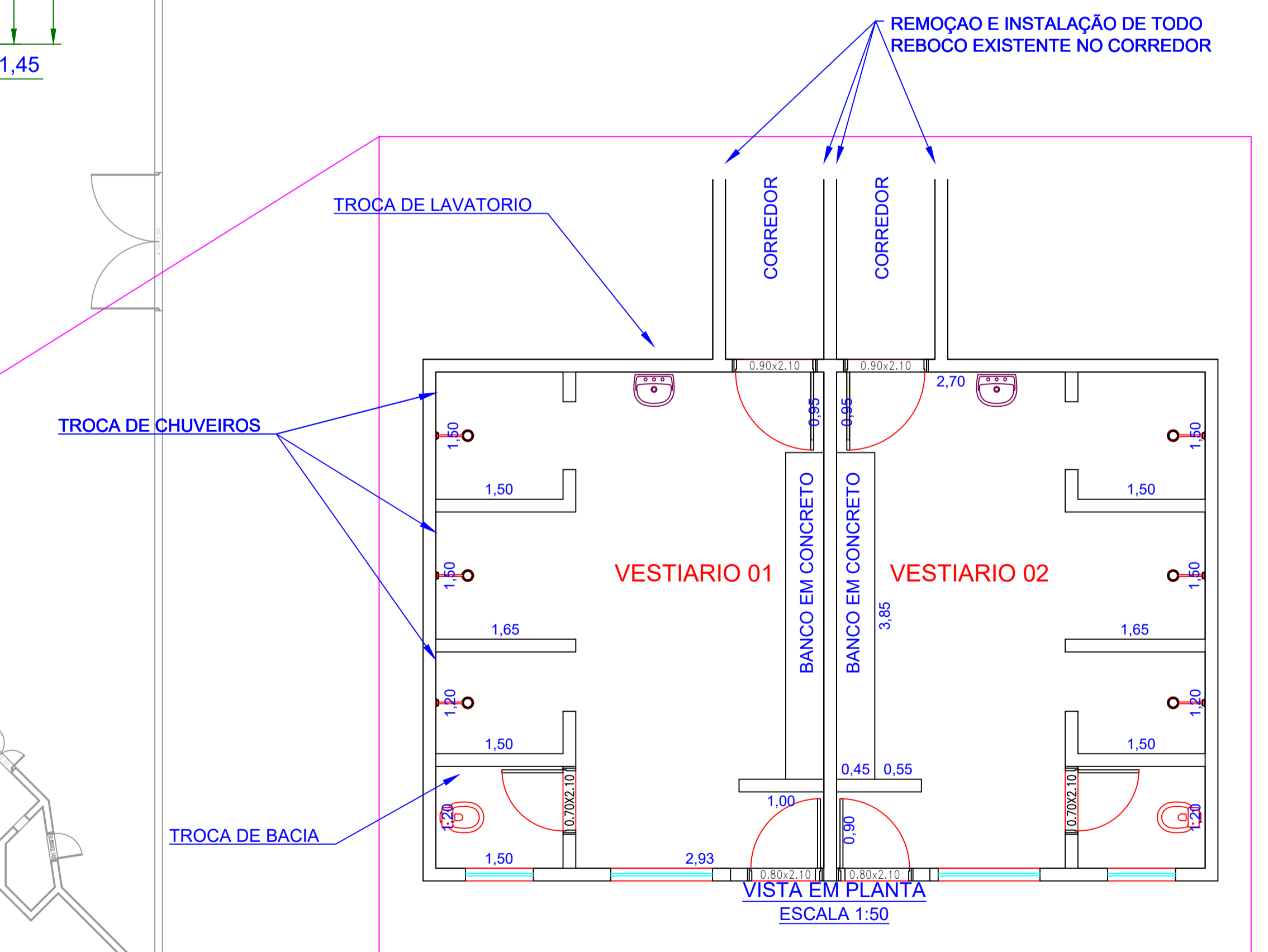
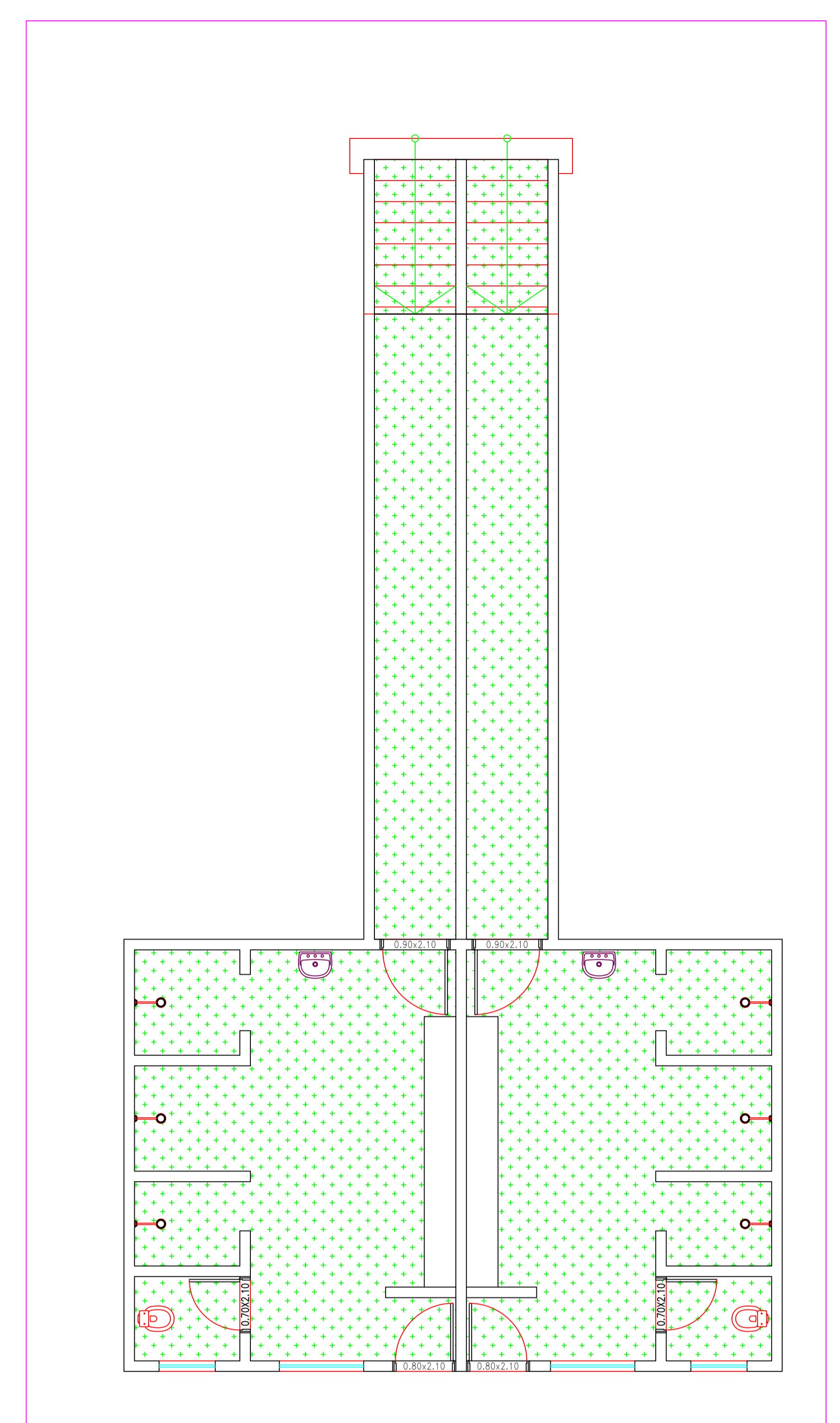
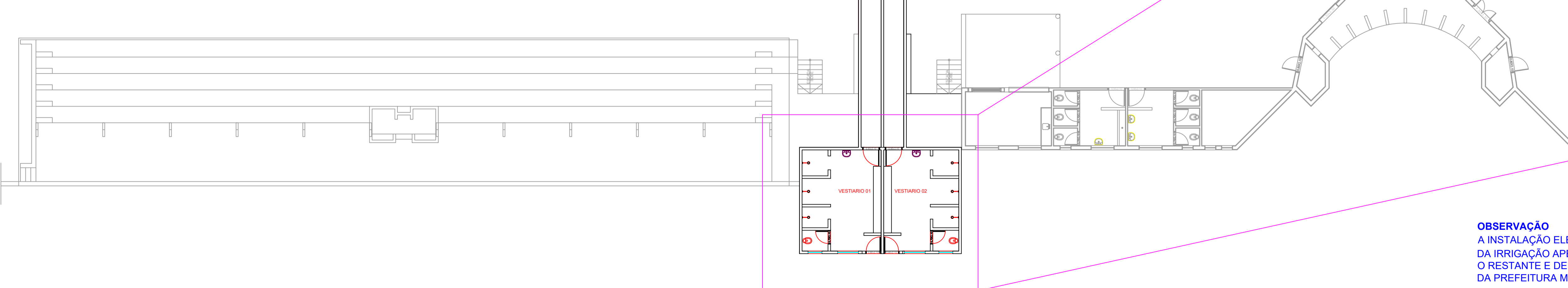
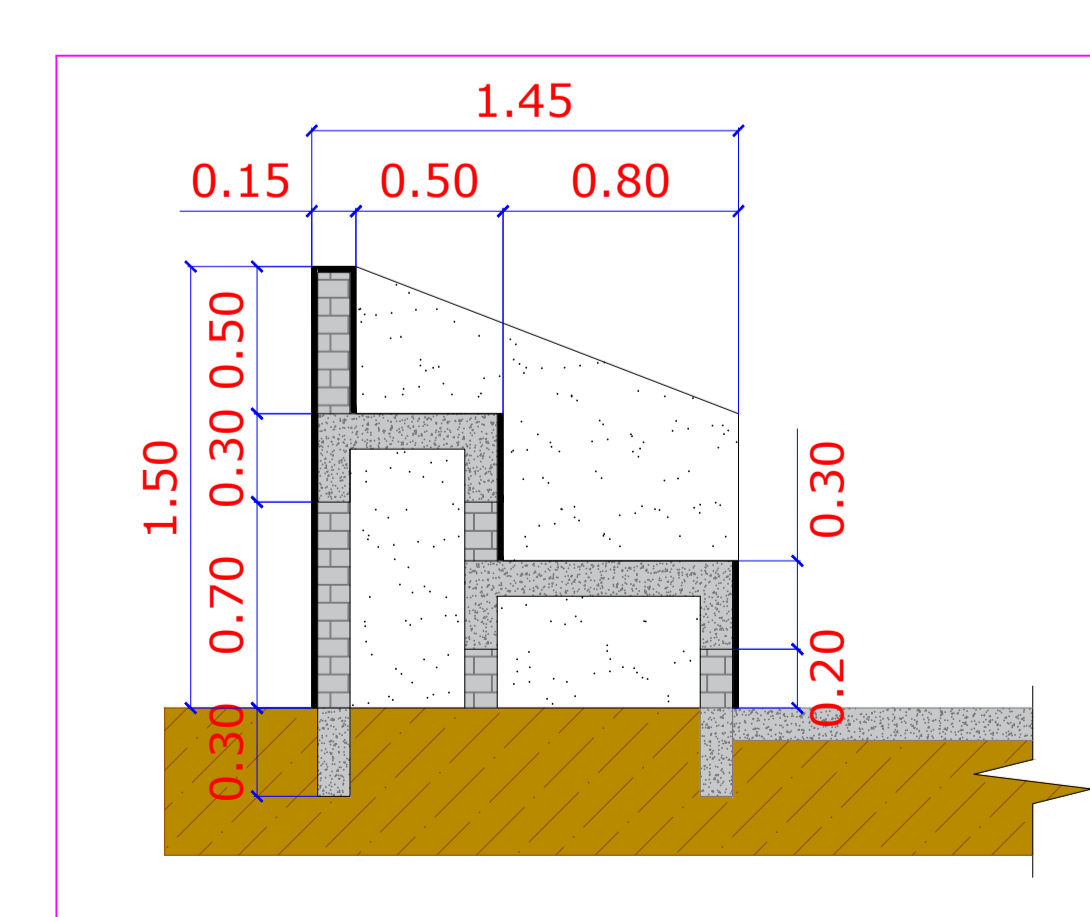
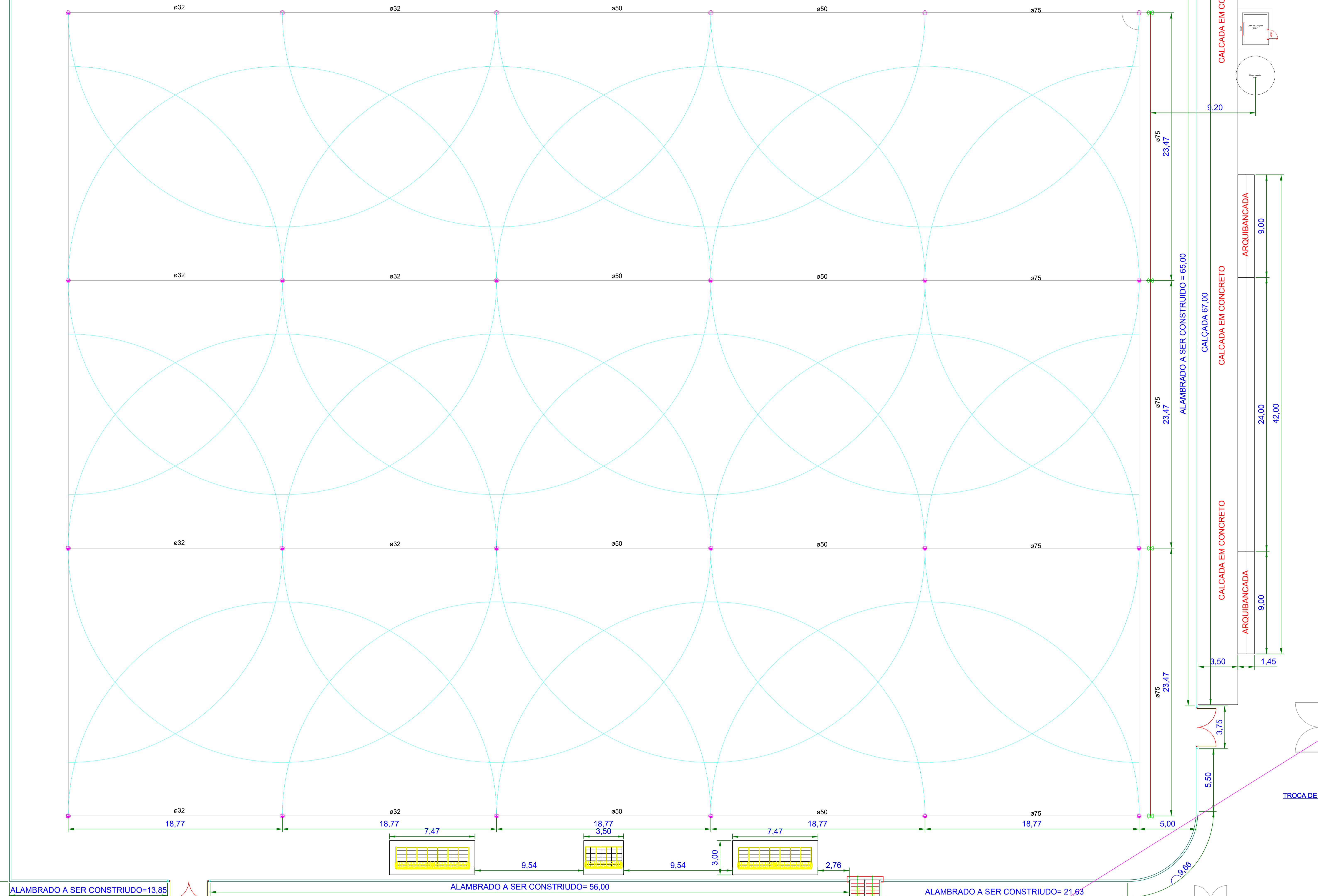
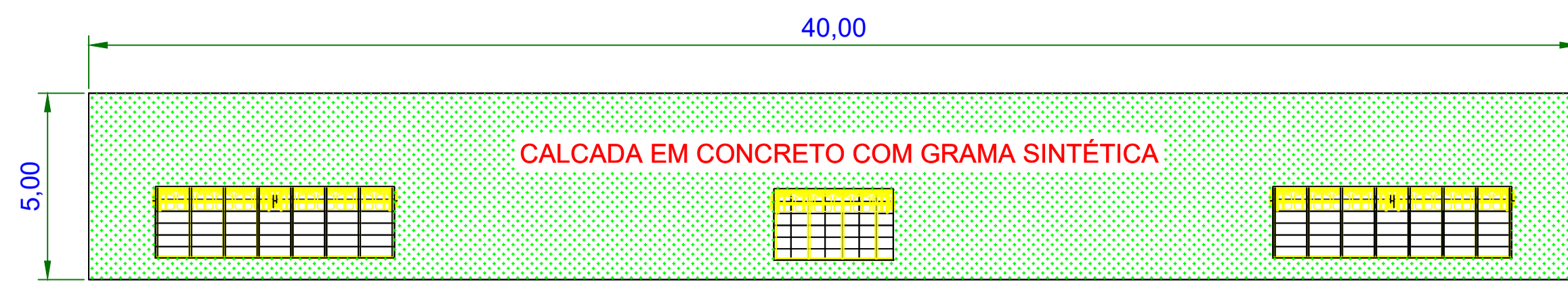


ALAMBRADO A SER CONSTRUÍDO = 82,87



OBSERVAÇÃO  
A INSTALAÇÃO ELÉTRICA DA IRRIGAÇÃO APENAS ATÉ CHEGAR NO PAINEL O RESTANTE É DE RESPONSABILIDADE DA PREFEITURA MUNICIPAL

ANEXO I

ITEM	QUANT	DENOMINAÇÃO	DIMENSÕES	MATERIAL	PESO
<b>VM ENGENHARIA</b> PROJETOS E CONSTRUÇÃO CIVIL					
Cliente: PREFEITURA MUNICIPAL PEDERNEIRAS/ SP					
Projeto: REFORMA NO ESTADIO MUNICIPAL					
FOLHA Nº 01/09					
LAYOUT GERAL					
INDICADA					

