

Relação do aço

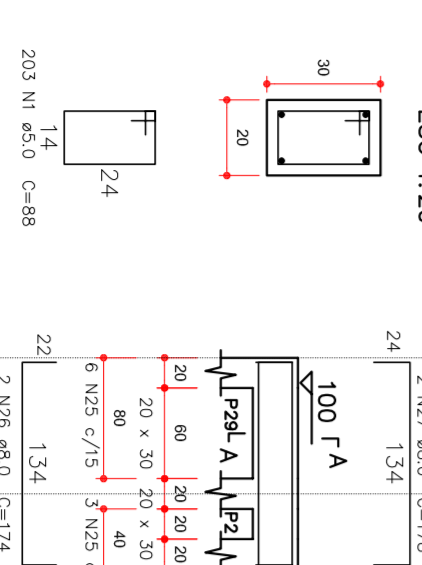
ELEMENTO	AÇO	N	DIAM	Q	UNIT	C.TOTAL
	(cm)		(cm)		(cm)	(cm)
14xP1	CA60	1	5,0	140	68	9520
14xP15	CA60	2	10,0	56	112	6272
14xP29	CA60	3	5,0	210	68	14280
	CA60	4	10,0	156	172	9652
	CA60	5	10,0	336	68	22848
	CA60	6	10,0	356	285	15860
V1	CA60	1	3,0	203	85	17864
	CA60	2	8,0	2	1007	2014
	CA60	2	8,0	2	966	1932
	CA60	2	8,0	2	1066	2132
	CA60	5	8,0	2	1198	2396
	CA60	6	8,0	2	1200	2400
	CA60	7	8,0	2	1200	1904
	CA60	8	8,0	2	952	17864
V2	CA60	9	5,0	203	88	1804
	CA60	10	8,0	2	1007	2014
	CA60	11	8,0	2	998	1996
	CA60	12	8,0	2	1066	2132
	CA60	13	8,0	2	1198	2396
	CA60	14	8,0	2	1198	2396
	CA60	15	8,0	2	1200	2400
	CA60	16	8,0	2	952	17864
	CA60	17	5,0	203	88	17864
	CA60	18	8,0	2	1007	2014
	CA60	19	8,0	2	998	1996
	CA60	20	8,0	2	1066	2132
	CA60	21	8,0	2	1174	2348
	CA60	22	8,0	2	1198	2396
	CA60	23	8,0	2	1200	2400
	CA60	24	8,0	2	932	1904
	CA60	25	3,0	9	98	792
	CA60	25	5,0	2	174	348
	CA60	26	5,0	9	88	792
	CA60	29	8,0	2	174	348
	CA60	30	8,0	2	178	356

Resumo do aço

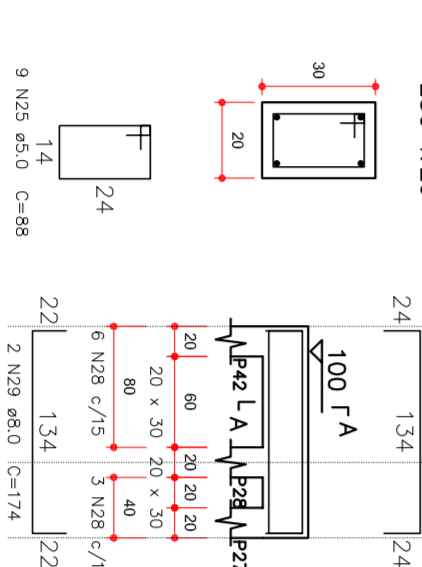
AÇO	DIAM	C.TOTAL	PESO + 10%
(m)	(mm)	(kg)	(kg)
CA60	8,0	409,8	178,1
CA60	9,0	318,6	176,3
FE30	5,0	1018,2	172,5
CA60	TOTAL	394,4	
CA60		172,5	

Vol. de concreto Estiços: (C-15) = 1,85 m³
 Vol. de concreto Total Baldrame e Pilar (C-25) = 7,27 m³
 Aço de forma total = 72,66 m²

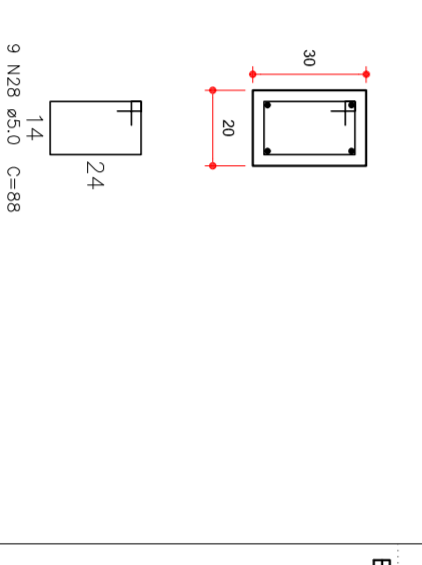
SEÇÃO A-A ESC 1:20



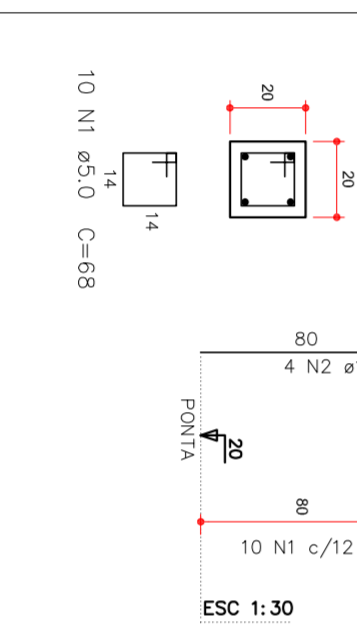
SEÇÃO A-A ESC 1:20



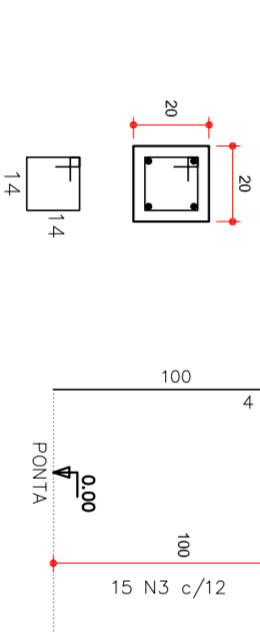
SEÇÃO A-A ESC 1:20



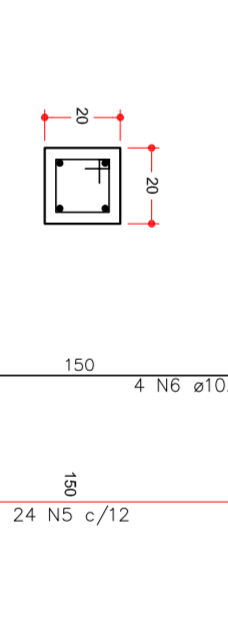
TÉRREO - L1 ESC 1:20



TÉRREO - L1 ESC 1:20



TÉRREO - L1 ESC 1:20



ANEXO I

04/04

CONSTRUÇÃO DE UMA QUADRA POLIESPORTIVA

ASSUNTO:	PROJETO ESTRUTURAL DE ARQUITABANCA DA
LOCAL:	AVENIDA ARILDO FERNANDES, ESQ. C/ RUA MARIA APARECIDA ALVES
BARRIO:	C. H. GARCIA METÓDIO BERTOLINI
MUNICÍPIO:	PEDERNERAS/SP
RESP.TECN.:	ENGR CIVIL RAFAEL TRAMONTE LEME - CRB/SP 5069465124
DESENHO:	RANDY BERRAMASSO - TÉCNICO EM EDIFICAÇÕES CRB/SP 5069053997
DATA:	FEV/2018
ESCALA:	INDICADA

