

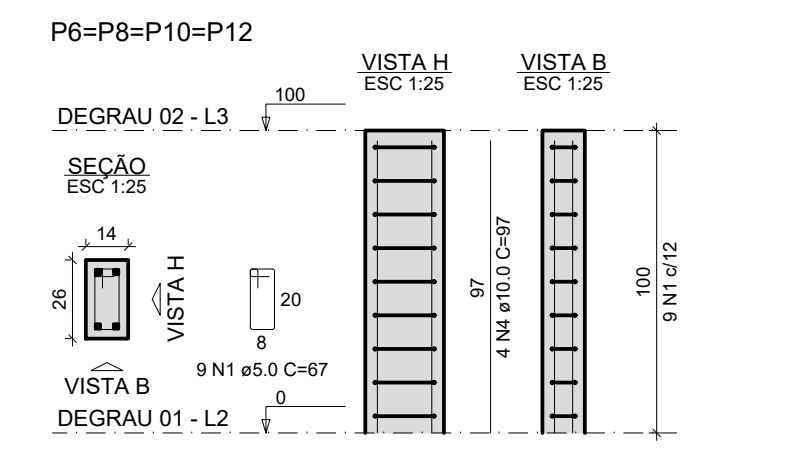
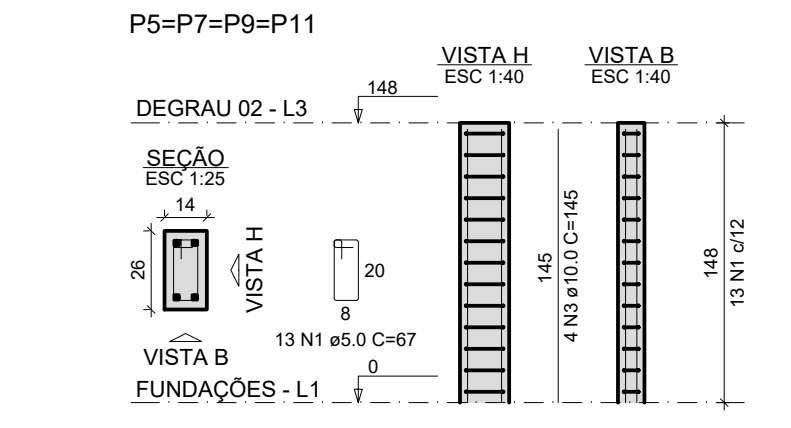
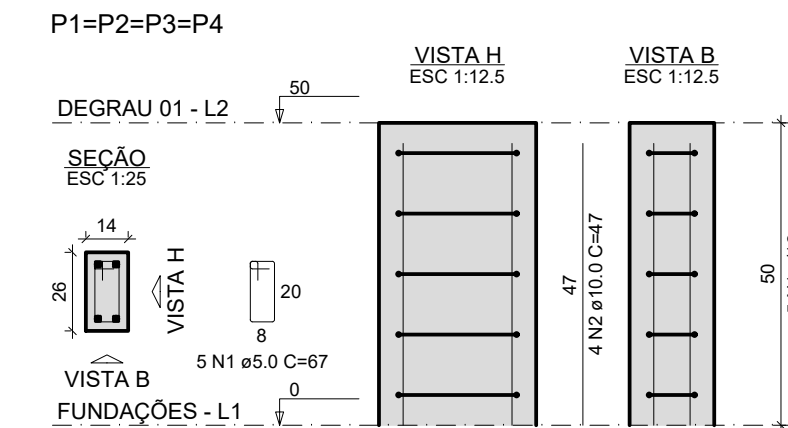
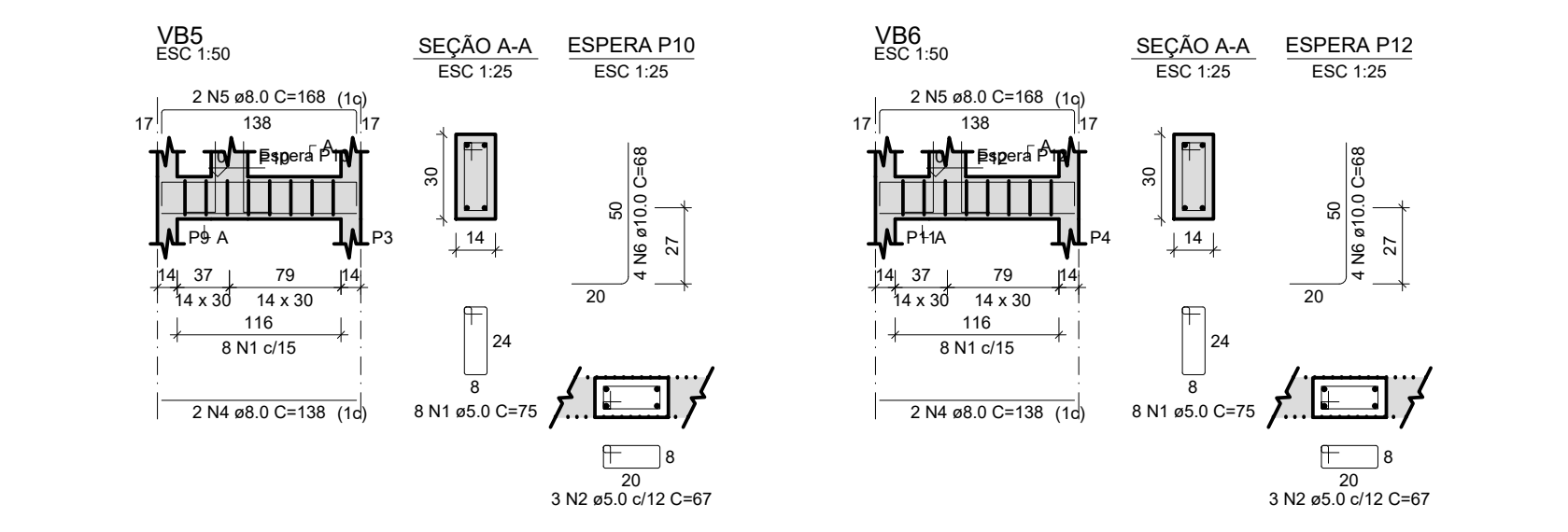
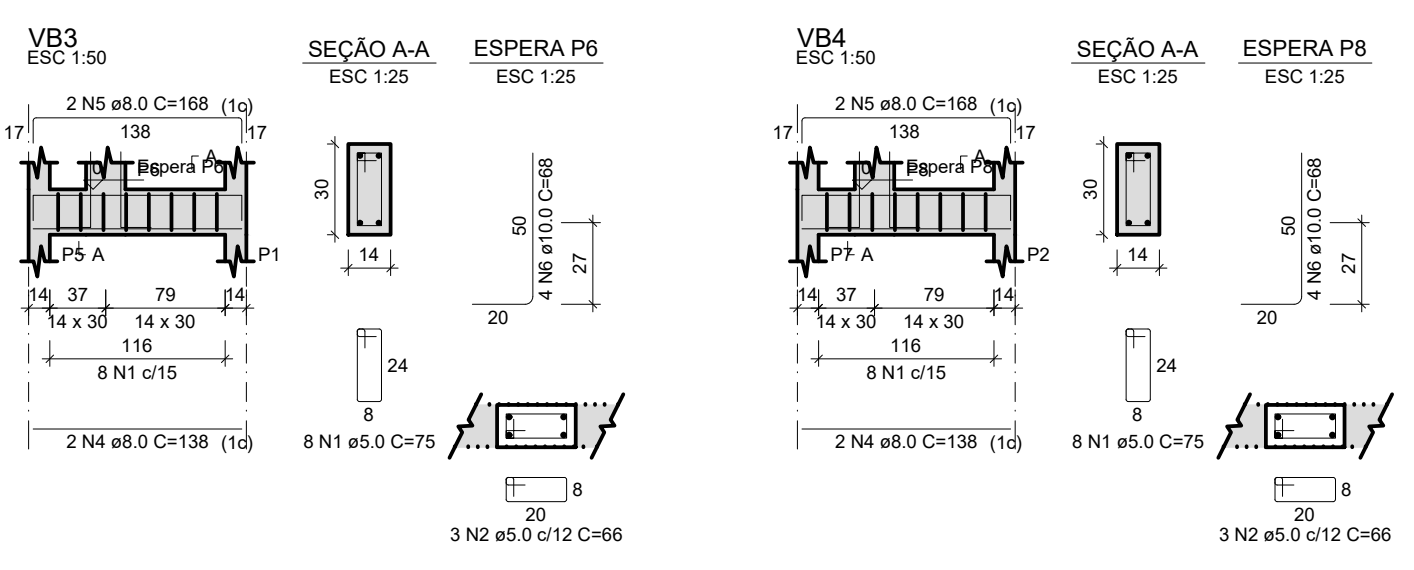
RELAÇÃO DO AÇO

ACAO	N	DIAM (mm)	QUANT	C.UNIT (cm)	C.TOTAL (cm)
CA60	1	5.0	140	75	10500
CA50	2	5.0	12	66	792
CA50	3	8.0	8	893	7144
CA50	4	8.0	8	138	1104
CA50	5	8.0	8	168	1344
CA50	6	10.0	16	66	1056

RESUMO DO AÇO

ACAO	DIAM (mm)	C.TOTAL (m)	PESO + 0% (kg)
CA50	8.0	95.9	37.8
CA50	10.0	10.9	6.7
CA50	5.0	113	17.4
PESO TOTAL (kg)			
CA50			44.6
CA60			17.4

Volume de concreto (C-30) = 1.00 m³
Área de forma = 17.57 m²



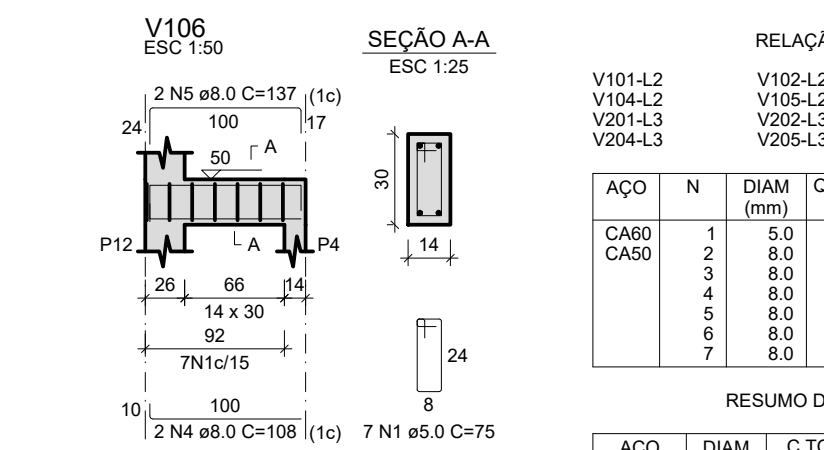
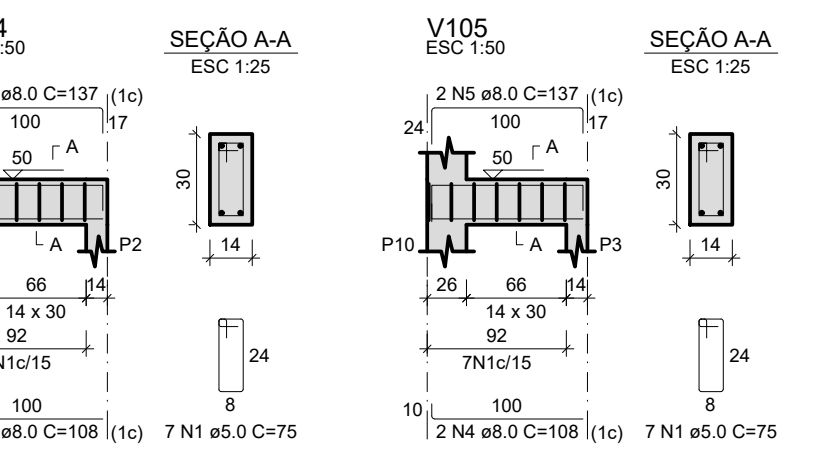
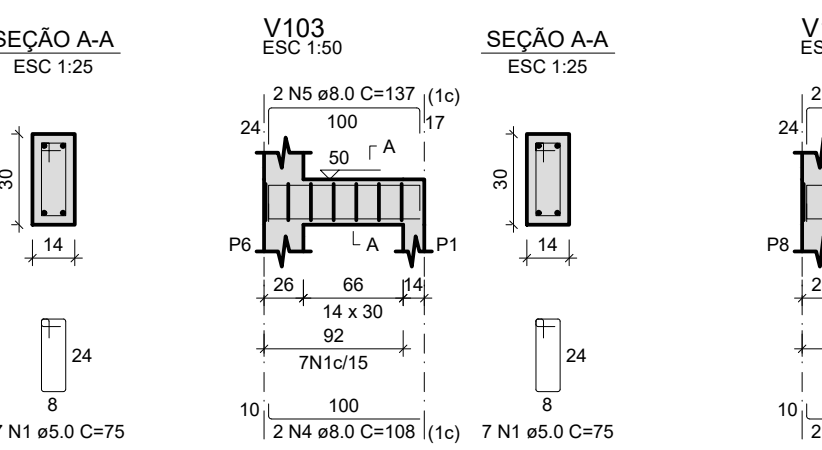
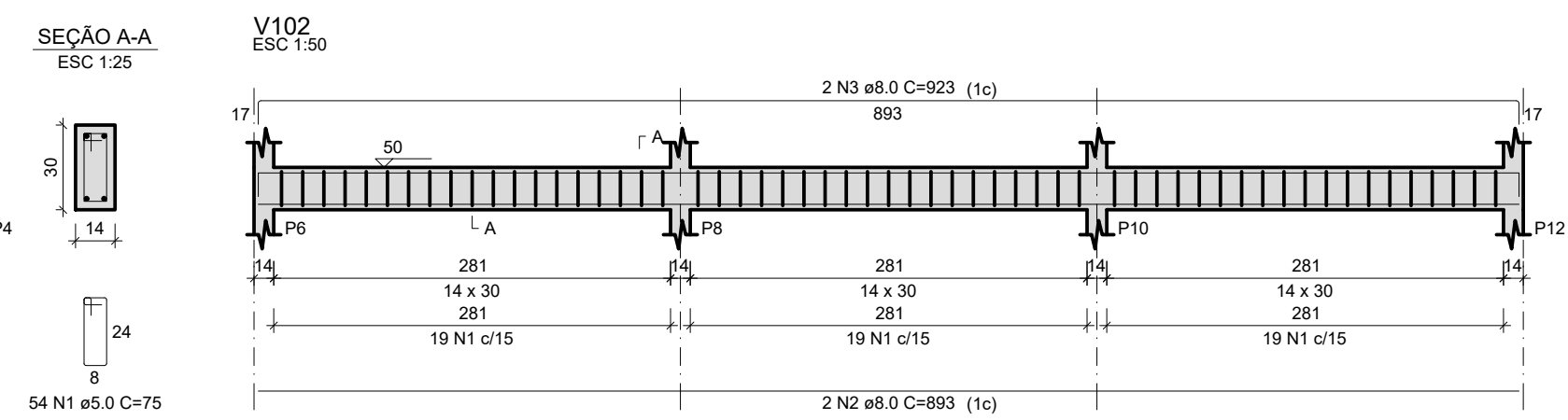
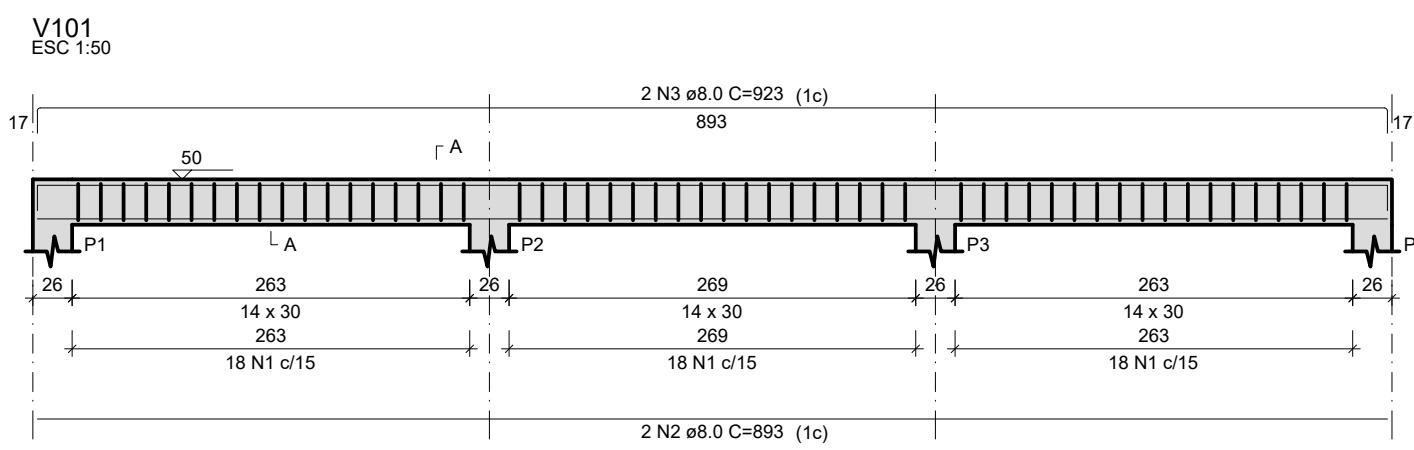
RELAÇÃO DO AÇO

ACAO	N	DIAM (mm)	QUANT	C.UNIT (cm)	C.TOTAL (cm)
CA60	1	5.0	108	67	7236
CA50	2	10.0	16	47	752
CA60	3	10.0	16	145	2320
CA50	4	10.0	16	97	1552

RESUMO DO AÇO

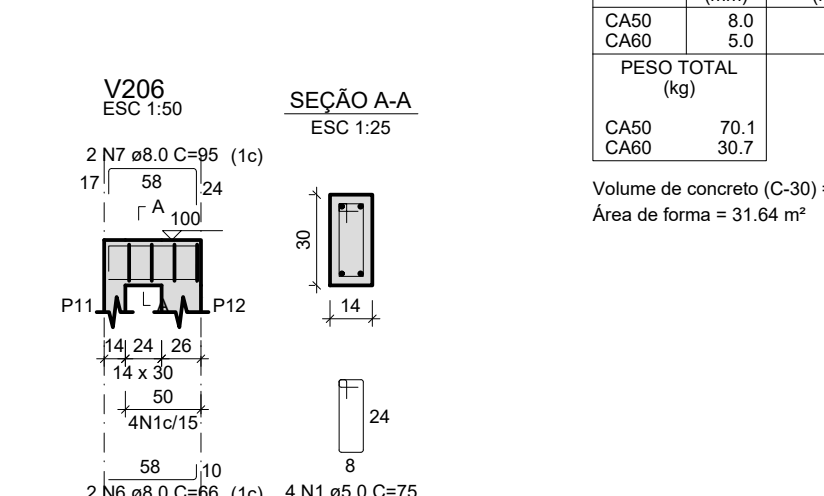
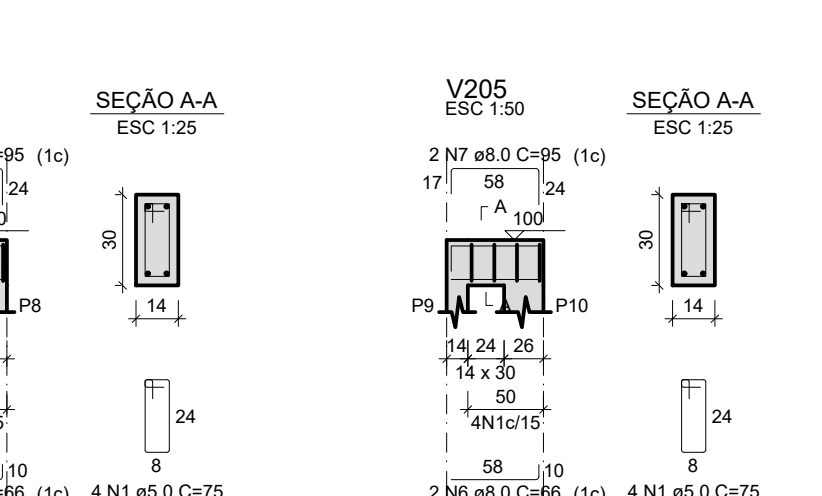
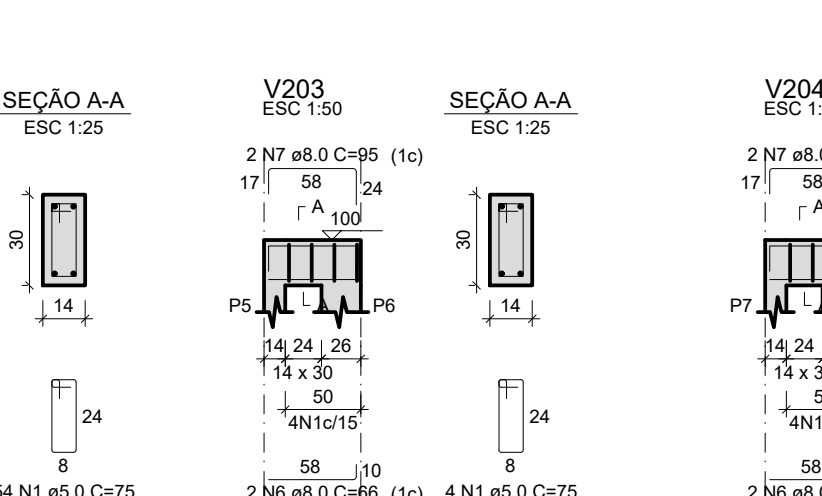
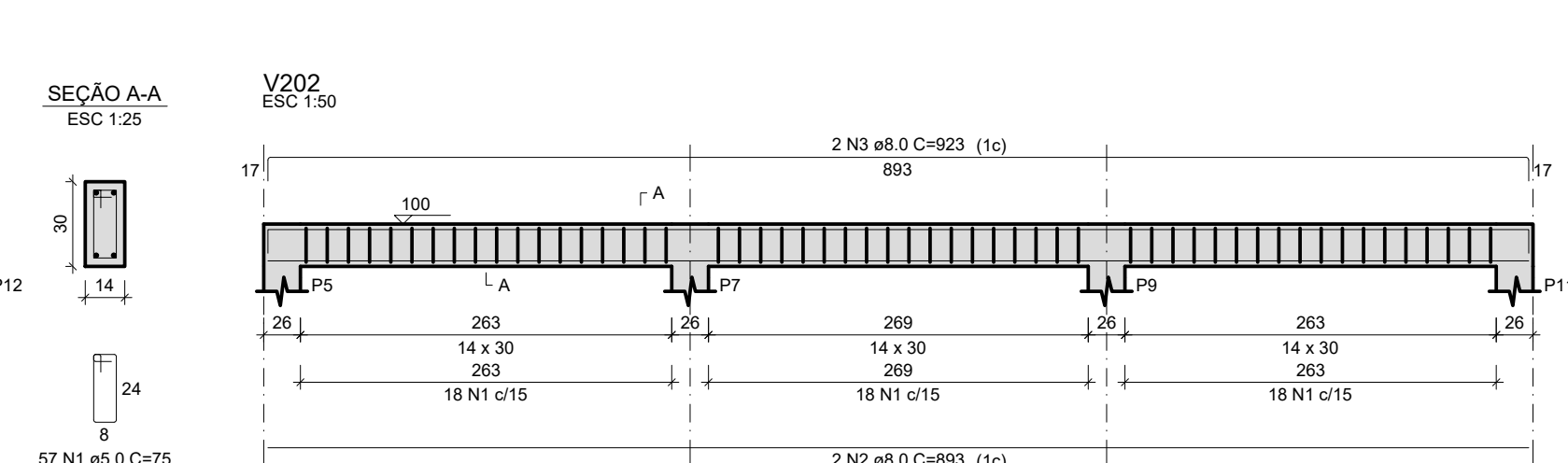
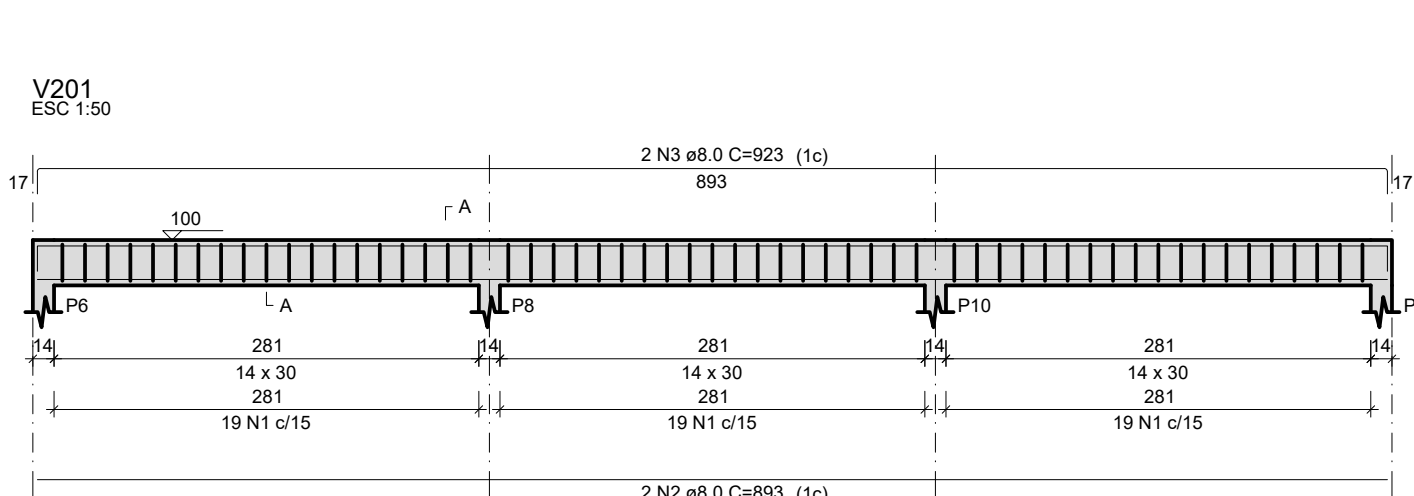
ACAO	DIAM (mm)	C.TOTAL (m)	PESO + 0% (kg)
CA50	10.0	46.2	28.5
CA60	5.0	72.4	11.2
PESO TOTAL (kg)			
CA50			28.5
CA60			11.2

Volume de concreto (C-30) = 0.43 m³
Área de forma = 9.24 m²



RELAÇÃO DO AÇO

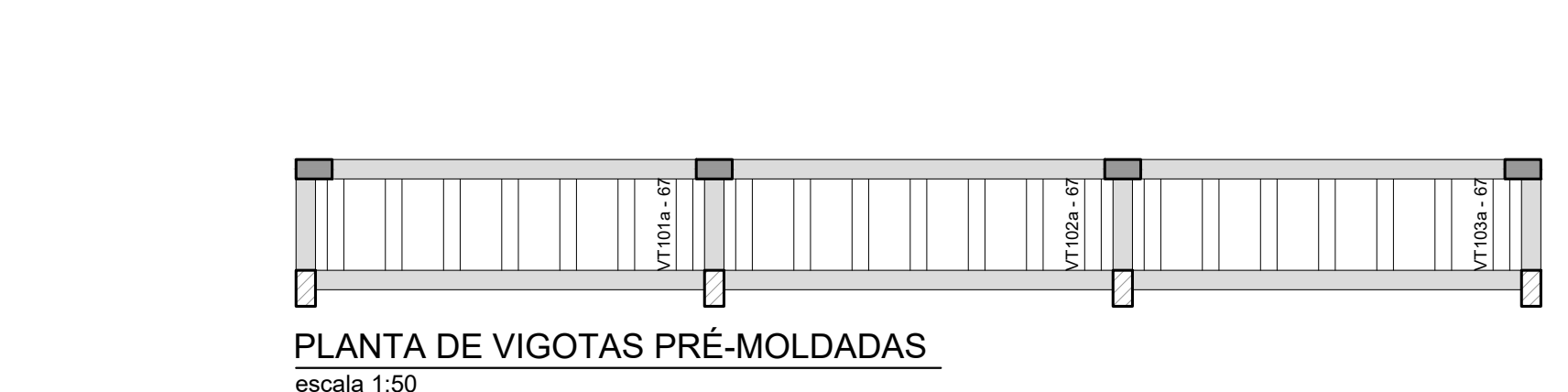
ACAO	N	DIAM (mm)	QUANT	C.UNIT (cm)	C.TOTAL (cm)
CA60	1	5.0	266	75	19950
CA50	2	8.0	8	893	7144
CA50	3	8.0	8	923	7384
CA50	4	8.0	8	108	864
CA50	5	8.0	8	137	1096
CA50	6	8.0	8	66	528
CA50	7	8.0	8	95	760



RESUMO DO AÇO

ACAO	DIAM (mm)	C.TOTAL (m)	PESO + 0% (kg)
CA50	8.0	177.8	70.1
CA60	5.0	199.5	30.7
PESO TOTAL (kg)			
CA50			70.1
CA60			30.7

Volume de concreto (C-30) = 1.80 m³
Área de forma = 31.64 m²



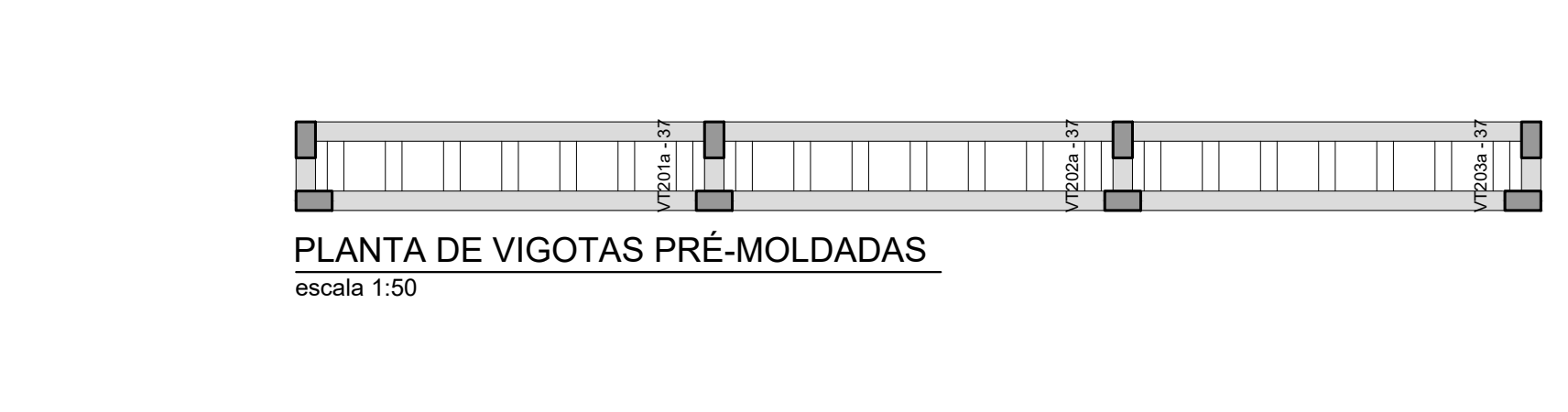
RELAÇÃO DO AÇO

ACAO	N	DIAM (mm)	QUANT	C.UNIT (cm)	C.TOTAL (cm)
CA60	1	TR 12645	21	78	1638
CA60	2	4.2	21	86	1806

RESUMO DO AÇO

ACAO	DIAM (mm)	C.TOTAL (m)	PESO + 0% (kg)
CA60	4.2	18.1	2
TR 12645		16.4	14.6
PESO TOTAL (kg)			
CA60			16.5

Volume de concreto (C-30) = 0.00 m³
Área de forma = 0.00 m²



RELAÇÃO DO AÇO

ACAO	N	DIAM (mm)	QUANT	C.UNIT (cm)	C.TOTAL (cm)
CA60	1	TR 12645	21	48	1008
CA60	2	4.2	21	56	1176

RESUMO DO AÇO

ACAO	DIAM (mm)	C.TOTAL (m)	PESO + 0% (kg)
CA60	4.2	11.8	1.3
TR 12645		10.1	9
PESO TOTAL (kg)			
CA60			10.3

Volume de concreto (C-30) = 0.00 m³
Área de forma = 0.00 m²

ANEXO II

V.M. – Engenharia de Novo Horizonte Ltda
Rua Zairo do Carmo Turchiar, 282
Novo Horizonte – SP
CNPJ:22.543.380/0001-43

PROJETO BÁSICO

Folha: **09/09**

Descrição da Prancha: **VIGAS E PILARES DA ARQ. MENOR**

Objeto: REFORMA NO ESTADIO MUNICIPAL DE PEDERNEIRAS

Proprietário: MUNICIPIO DE PEDERNEIRAS – SP

Endereço:

PROPRIETÁRIO: PREFEITO DO MUNICIPIO DE PEDERNEIRAS – SP

RES: TECNICO PELO PROJETO: DESD. FELIPE NEZARI
ENGENHEIRO CIVIL: SOBRINHO

Observações e aprovações:

